

# SIRUBA®

銀爺牌工業用縫紉機

INDUSTRIAL SEWING MACHINE

# L918

WITH TRIMMER

## 零件圖 PARTS LIST



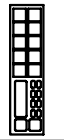










CE

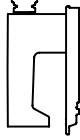




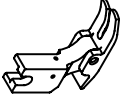







高林股份有限公司  
KAULIN MFG. CO., LTD.



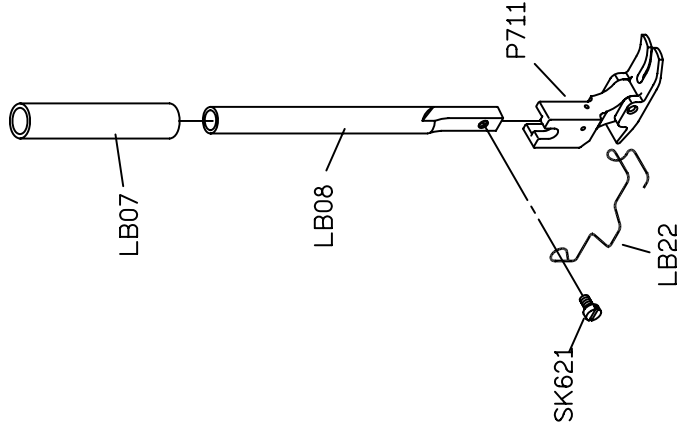
										
MODEL	SUB-CLASS	OPERATING PANEL	NEEDLE PLATE	FEED DOG	PRESSER FOOT	HOOK ASM	BOBBIN CASE ASM	BOBBIN	NEEDLE	HAND WHEEL
機 型	規 格	操 作 盒	針 板	送 具	押 具	梭 頭	梭 殼	梭 子	針 號	皮 帶 輪
L 918-L1-00 ~ L 918-L1-03	薄布料	無	E701	D701	P721	G121	G202	G303	DA*1#9	LH01-A1
L 918-L1-10 ~ L 918-L1-13		L-900	E701	D701	P721	G121	G202	G303	DA*1#9	
L 918-M1-00 ~ L 918-M1-03	薄中布 至 厚布料	無	E704	D701	P701	G121	G202	G303	DB*1#14	
L 918-M1A-00 ? (L-918-M1C-00) L 918-M1A-03 ? (L-918-M1C-03)			E704D	D702	P701	G121	G202	G303	DB*1#14	
L 918-M1-10 ~ L 918-M1-13		L-900	E704	D701	P701	G121	G202	G303	DB*1#14	
L 918-M1A-10 ? (L-918-M1C-10) L 918-M1A-13 ? (L-918-M1C-13)			E704D	D702	P701	G121	G202	G303	DB*1#14	



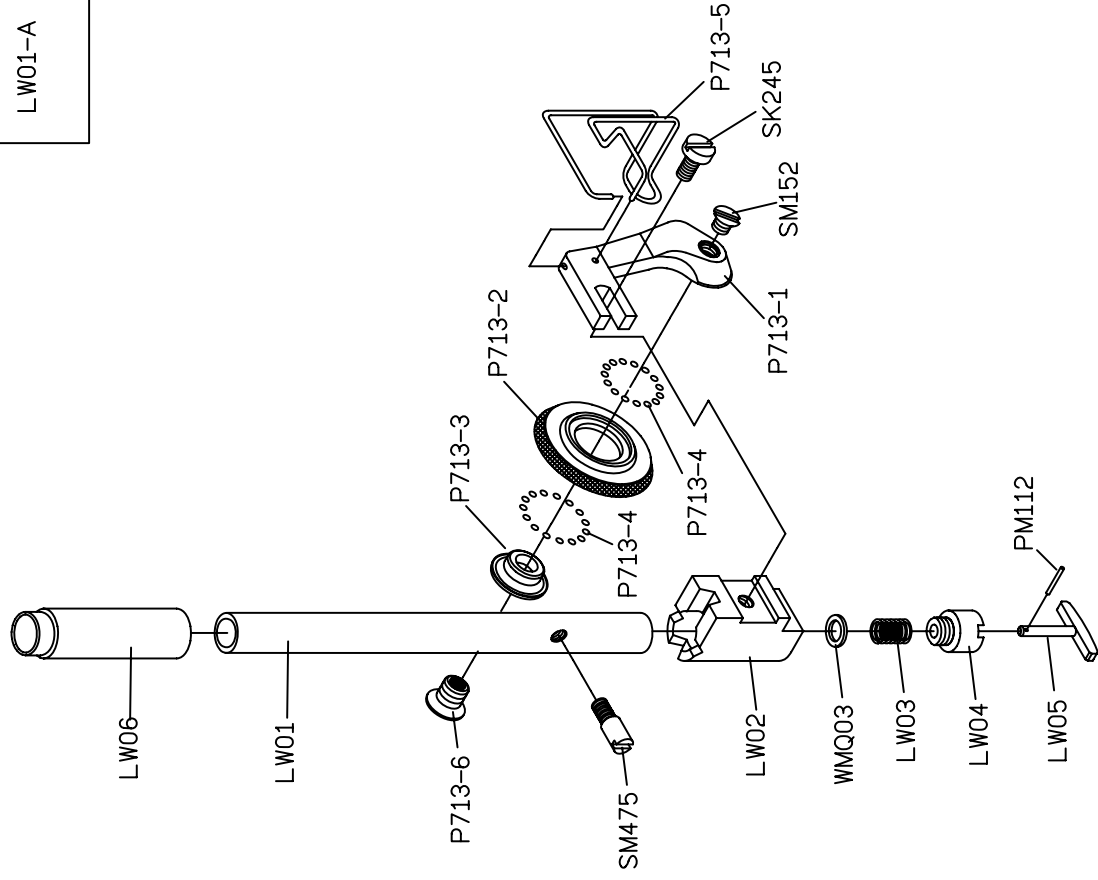
										
MODEL	SUB-CLASS	OPERATING PANEL	NEEDLE PLATE	FEED DOG	PRESSER FOOT	HOOK ASM	BOBBIN CASE ASM	BOBBIN	NEEDLE	HAND WHEEL
機 型	規 格	操作盒	針 板	送 具	押 具	梭 頭	梭 殼	梭 子	針 號	皮 帶 輪
L918-H1-00 ┆ L918-H1-03			E711	D711	P711	G125	G202	G303	DB*1#21	GLH01-A1
L918-H1-00A ┆ L918-H1-03A	中厚布	無	E711	D711	P711	G125	G202	G303	DB*1#21	GLH01Q-E
L918-H1A-00 ┆ L918-H1A-03	至		E711D	D711D	P711D	G125	G202	G303	DB*1#21	GLH01-A1
L918-H1A-00A ┆ L918-H1A-03A	厚布料		E711D	D711D	P711D	G125	G202	G303	DB*1#21	GLH01Q-E
L918-H1-10 ┆ L918-H1-13		L-900	E711	D711	P711	G125	G202	G303	DB*1#21	GLH01-A1
L918-H1A-10 ┆ L918-H1A-13		L-900	E711D	D711D	P711D	G125	G202	G303	DB*1#21	GLH01-A1

型別件對照表 MODEL COMPARELIST

H1



H1R



LW01-A

MODEL	SUB-CLASS	SPRING	SPRING	SPRING	SPRING	THREAD GUIDE	THREAD GUIDE	SPRING	THREAD GUIDE	THREAD GUIDE	THREAD GUIDE BAR	EJECTOR PIN	ADJUSTING KNOB
機 型	規 格	控線彈簧	控線彈簧	挑線彈簧	固定片	擋環片	壓簧	導線片	導線桿	頂出銷	調整旋鈕		
L918 /L1	薄布料	LA231	LA22	LA227	—	A LA17 B SK613	LB204	A LB06 B SK241	—	LB212	LC23G LC801		
		LA31D	LA22	LA27	A LA617 B SK690 C LU38	—	LB04	A LB06 B SK241	—	LB12	LC623G		
L918 /H1	中厚料 ~ 厚布料	LA131	LA122	LA27	A LA600 B SK690 C LU38	—	LB104	—	A LB100 B GLB106 C NK23 D WK09	LB12	LC600G		

# 型別件對照表 MODEL COMPARELIST

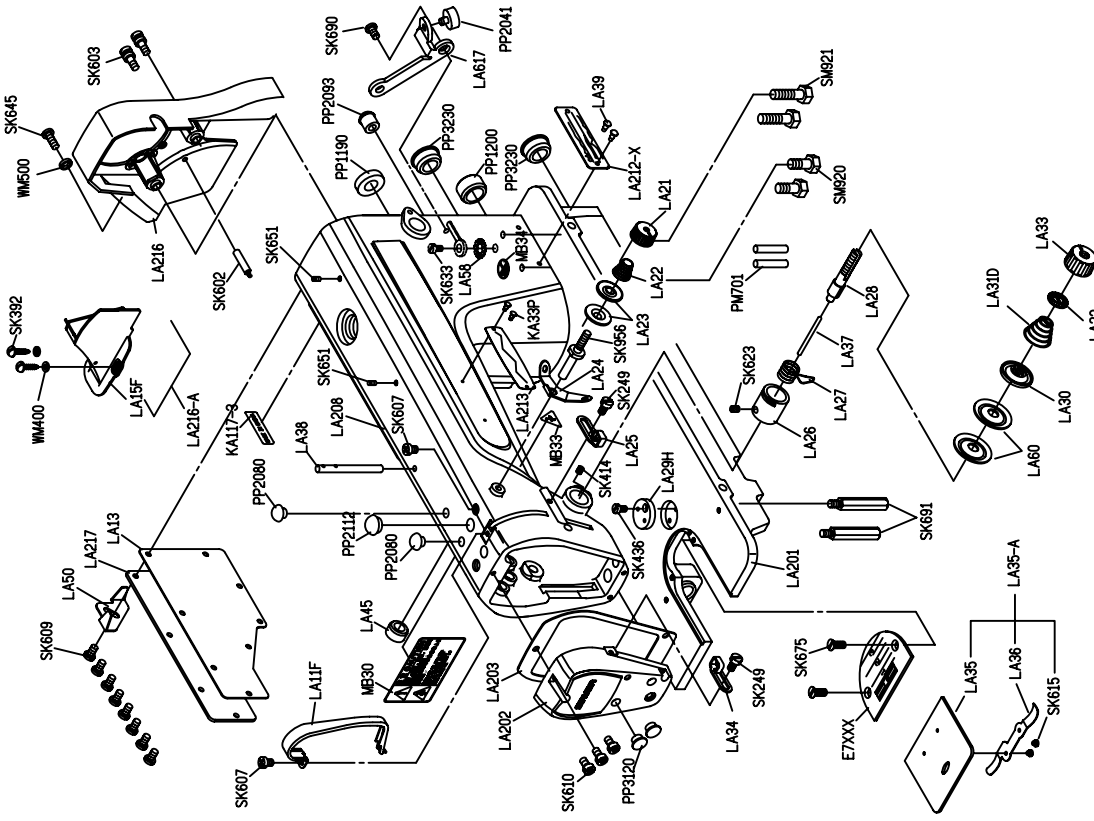
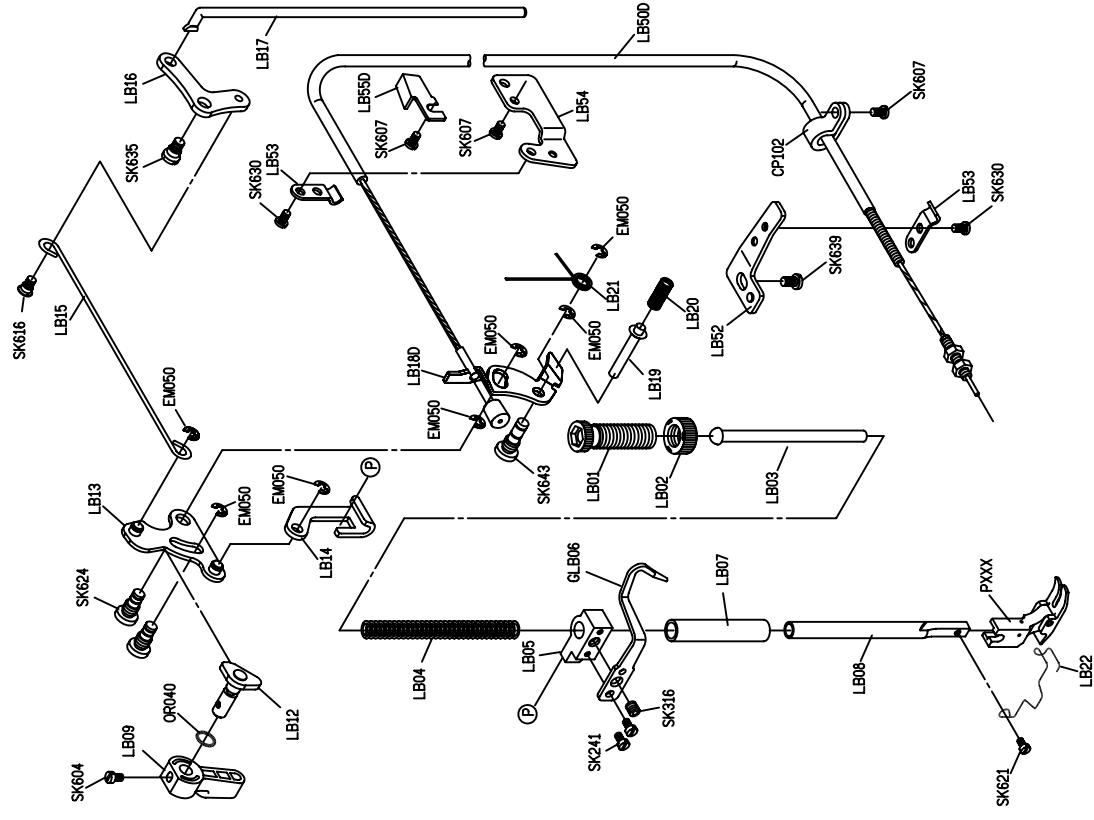
機 型	MODEL	規 格	SUB-CLASS	REGULATOR	CONNECTING ROD SENT	FIXED PIN	HOOK FIXER	COVER	THRAD TAKE UP LEVER	CRANK SHAFT	BUSING	THREAD GUIDE
L918 /L1		薄布料		調整銷	連桿座	固定銷	旋梭定位板	A	天秤	曲軸	襯套	導線環片
								B				
L918 /M1		薄布料		LH11	LC12	LC13	LE14	A	LG13	LG215	LG07	LG09
								B				
L918 /HM1		中厚料		LH111	LC612	LC613	LE614	A	LG13	LG615	LG107	LG109
								B				
L918 /H1		中厚料 ~ 厚布料		LH111	LC612	LC613	LE614	A	LG113	LG615	LG107	LG109
								B				



MODEL	SUB-CLASS	NEEDLE BAR	SPRING	ECCENTRIC	SOLENOID BRACKET	PRESSER PLATE	FIXED PLATE	FIXED PLATE	CONNECTING ROD	CONNECTING ROD
機 型	規 格	針 棒	拉 伸 彈 簧	偏 心 凸 輪	電 磁 閥 座	押 板	固 定 刀	固 定 片	連 桿	連 桿
L918 /L1	薄布料	LG04	LC10	LH06	LU26	LU04	LU05	LU28	A LU15 B SK662 C EM050 D SK664	—
L918 /M1	薄布料 ~ 中厚料	LG04	LC10	LH06	LU26	LU04	LU05	LU28	A LU15 B SK662 C EM050 D SK664	—
L918 /HM1	中厚料	LG104H	LC10	LH606	LU626	LU604	LU605	LU628	A LU615 B SK677 C NK26/MM402 D SK682	—
L918 /H1	中厚料 ~ 厚布料	LG104	LC10	LH606	LU626	LU604	LU605	LU628	A LU615 B SK677 C NK26/MM402 D SK682	—

# 型別件對照表 MODEL COMPARELIST

MODEL 機 型	SUB-CLASS 規 格	MOVABLE KNIFE 活動刀	MOVABLE KNIFE 活動刀	MOVABLE KNIFE CONNECTING ROD 活動刀連接桿	MOVABLE KNIFE CONNECTING ROD 活動刀連接桿	PRESSER PLATE 刀座	MOVABLE KNIFE 轉子連接	TRIMMER SOLENOID 切線電磁閥
L918 /L1	薄布料	A LU02	—	—	LU01	LU03	LU18	LU25
		B SK660						
L918 /M1	薄布料 ~ 中厚料	A LU02	—	—	LU01	LU03	LU18	LU25
		B SK660						
L918 /HM1	中厚料 ~ 厚布料	—	A LU602	—	—	LU603	LU618	LU625
			B SK683					
L918 /H1	中厚料 ~ 厚布料	—	A LU602	—	—	LU603	LU618	LU625
			B SK683					

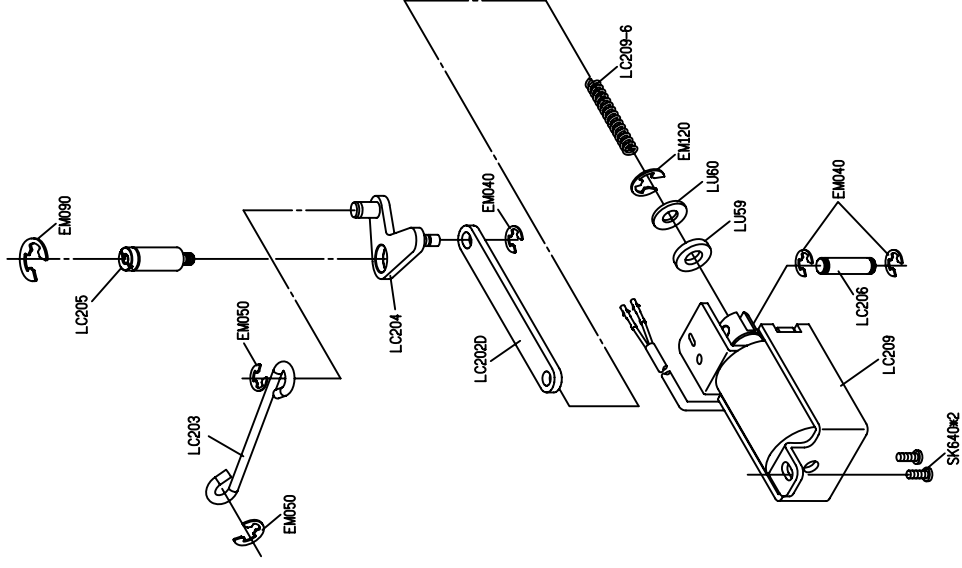
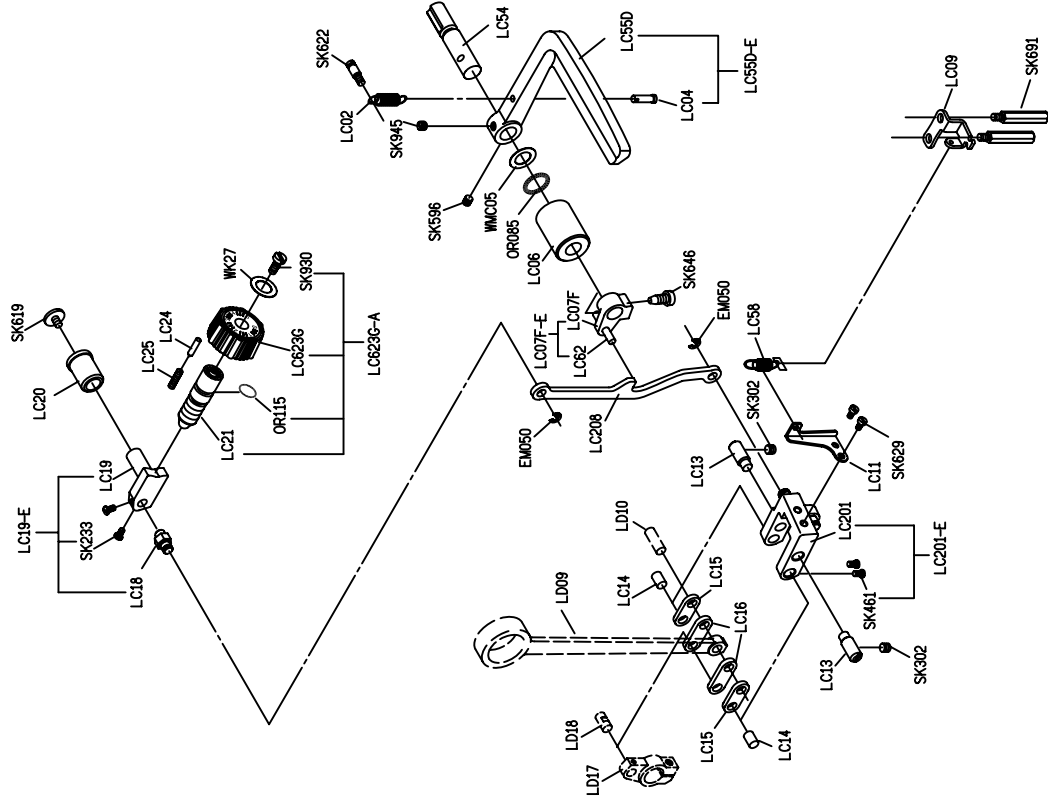


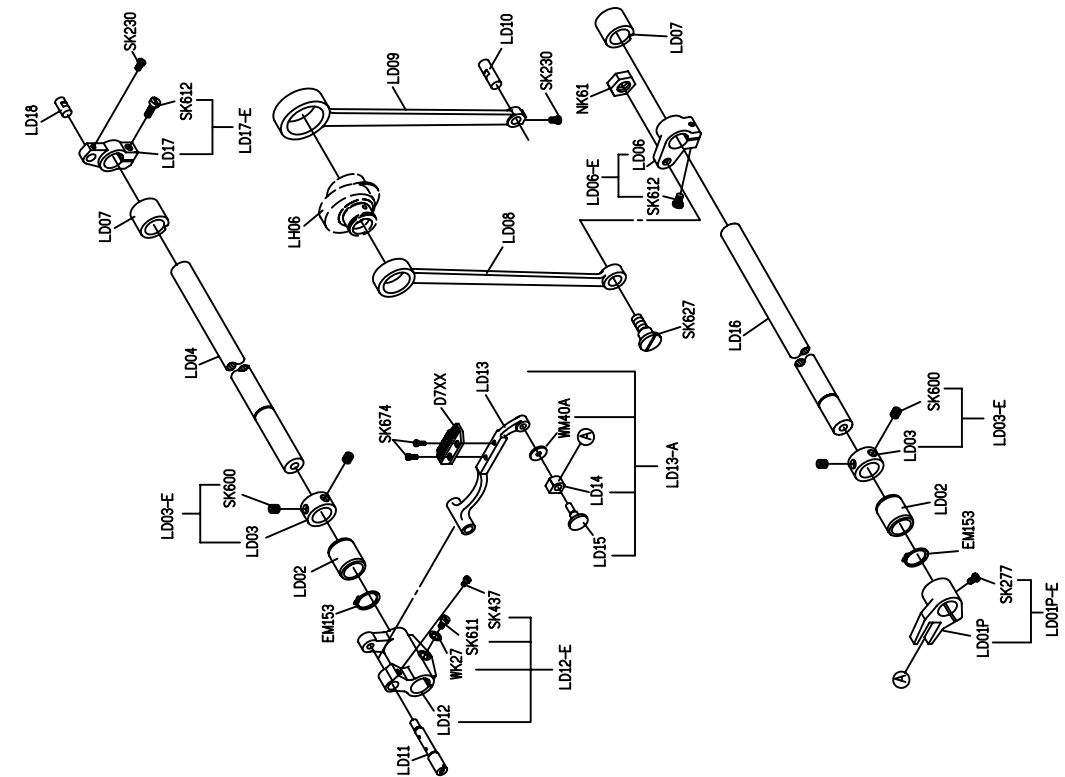
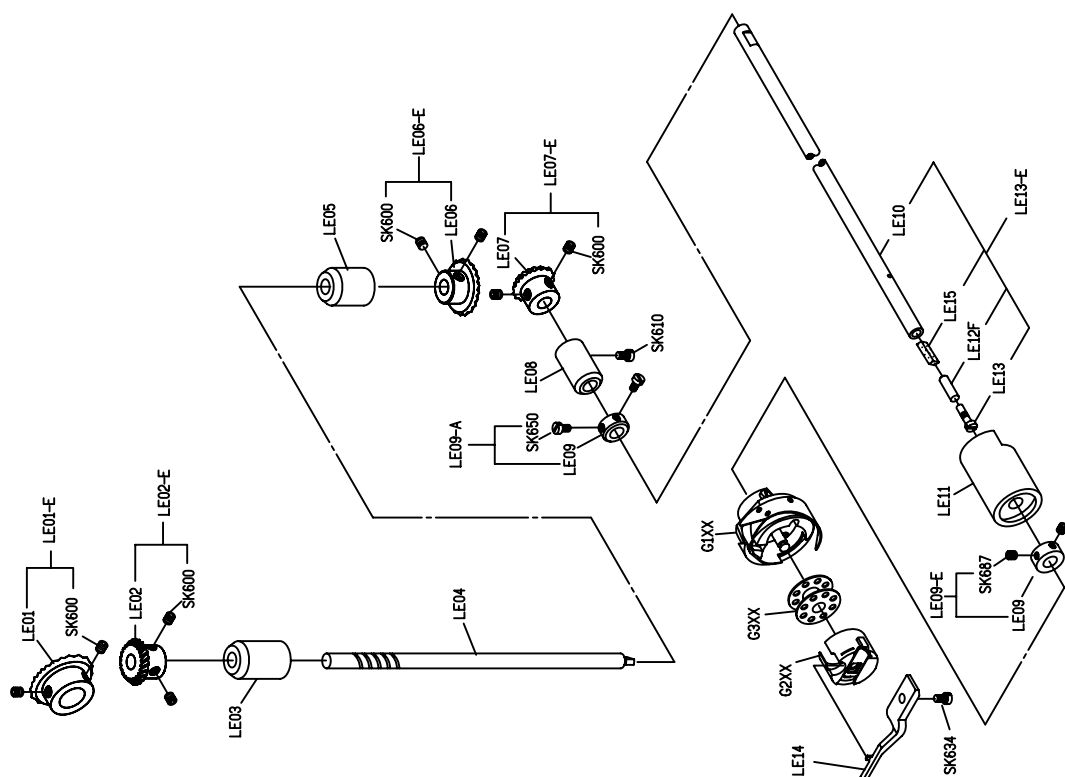
PARTS LIST FOR LB GROUP

PARTS LIST FOR LA GROUP

PARTS LIST FOR LC GROUP

PARTS LIST FOR LC GROUP

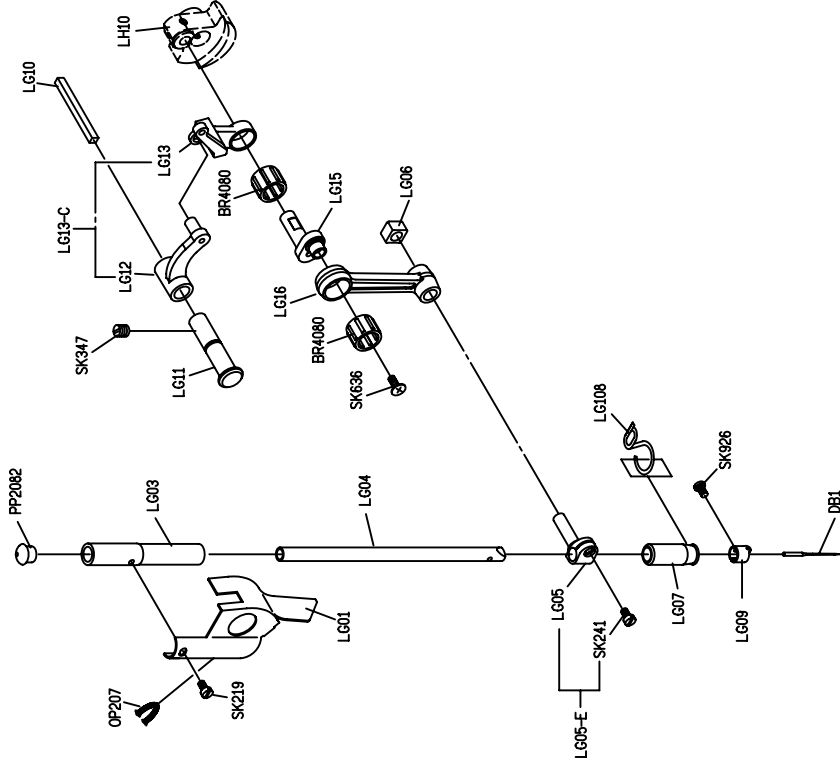




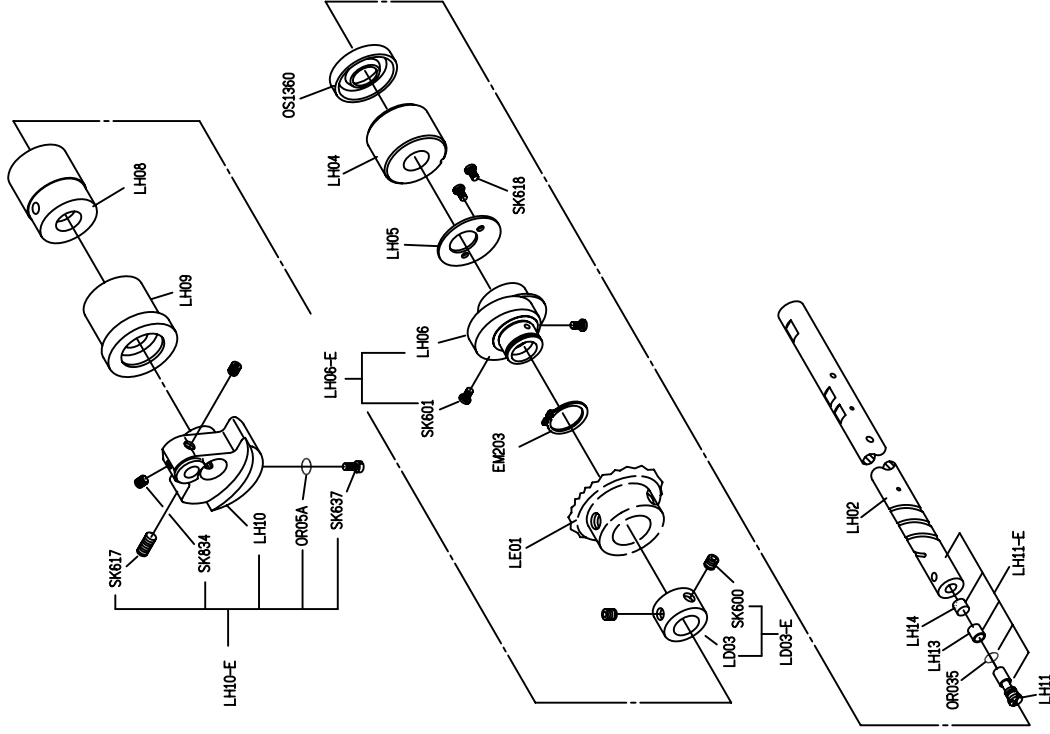
PARTS LIST FOR LE GROUP

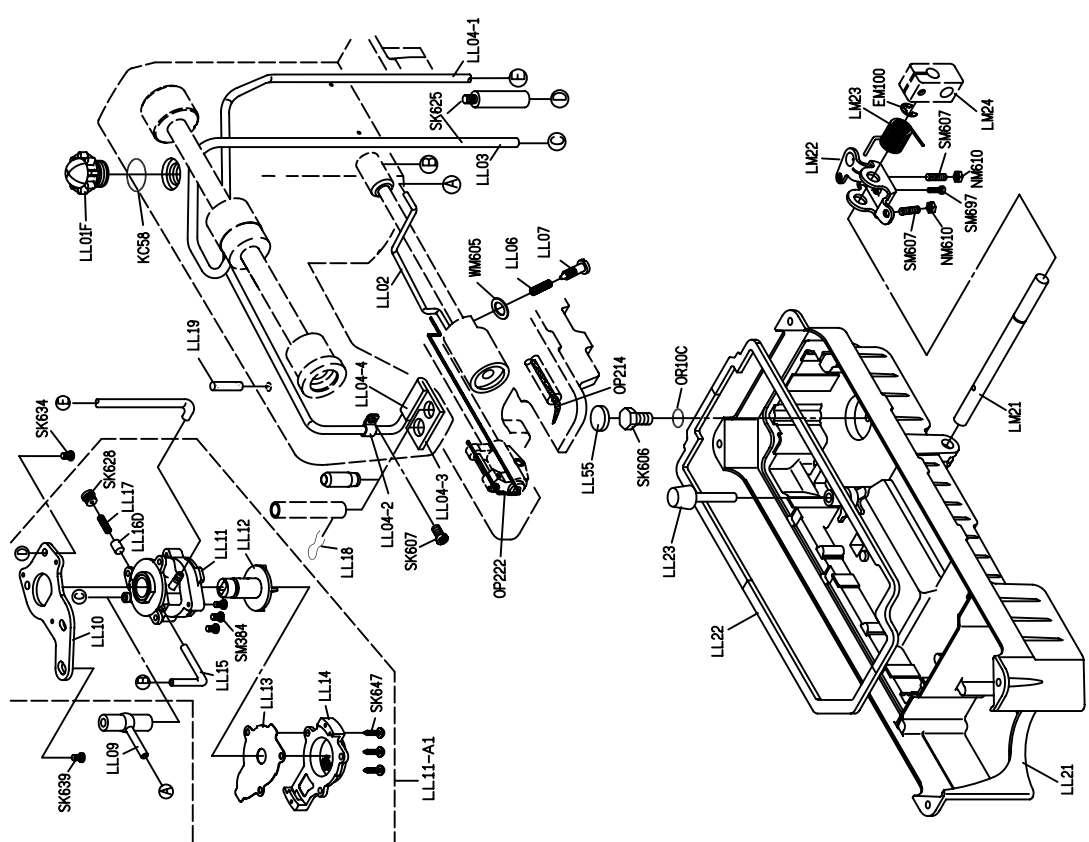
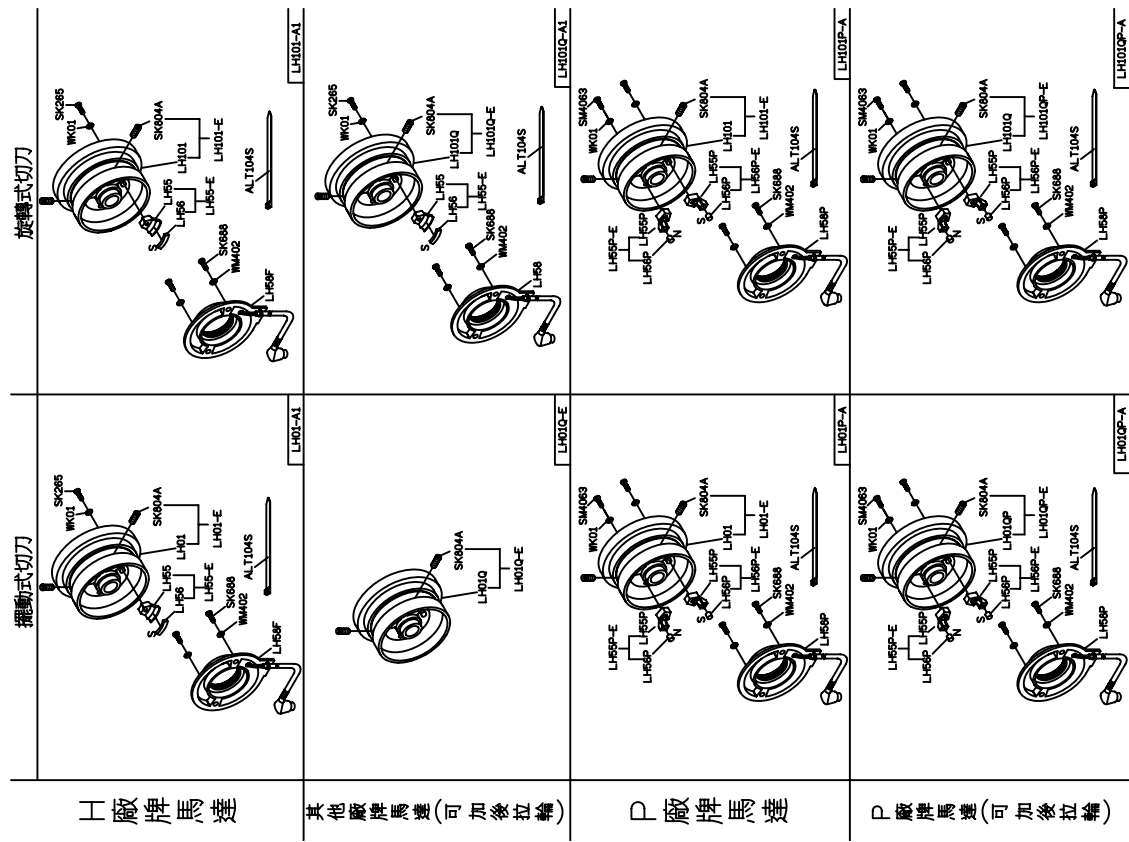
PARTS LIST FOR LD GROUP

# PARTS LIST FOR LG GROUP

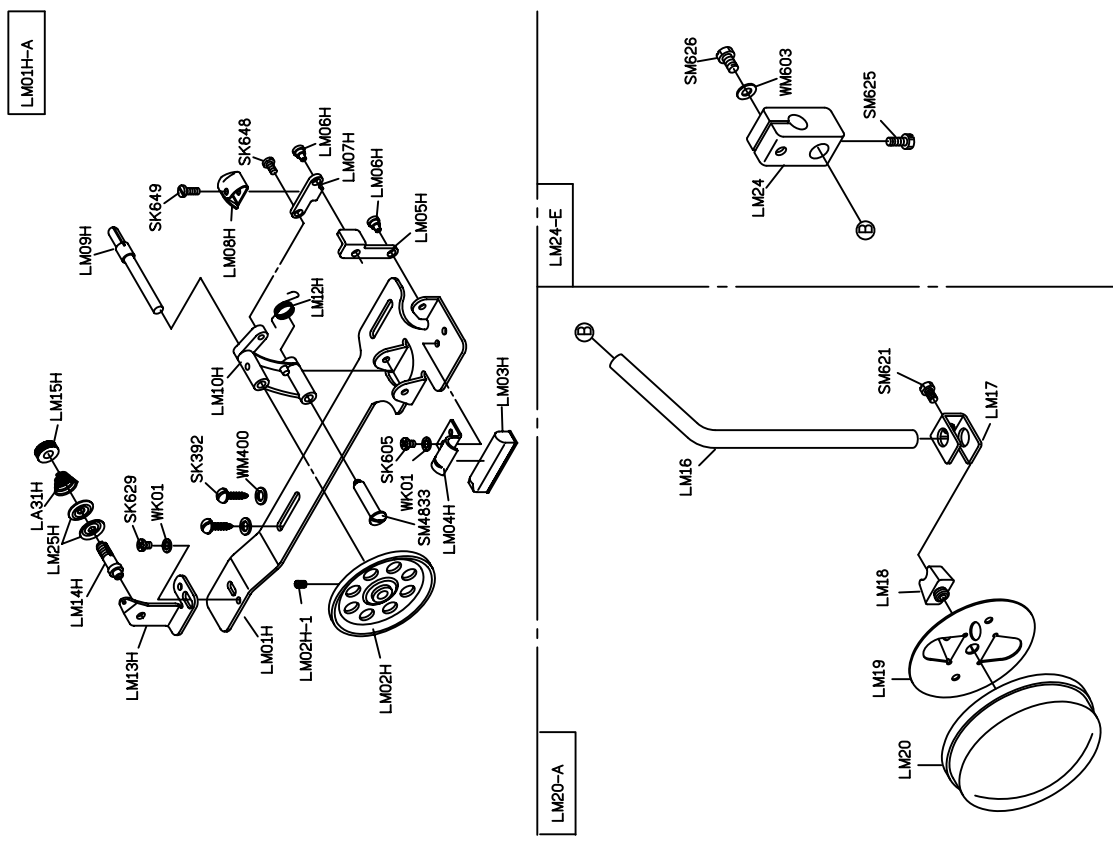


# PARTS LIST FOR LH GROUP

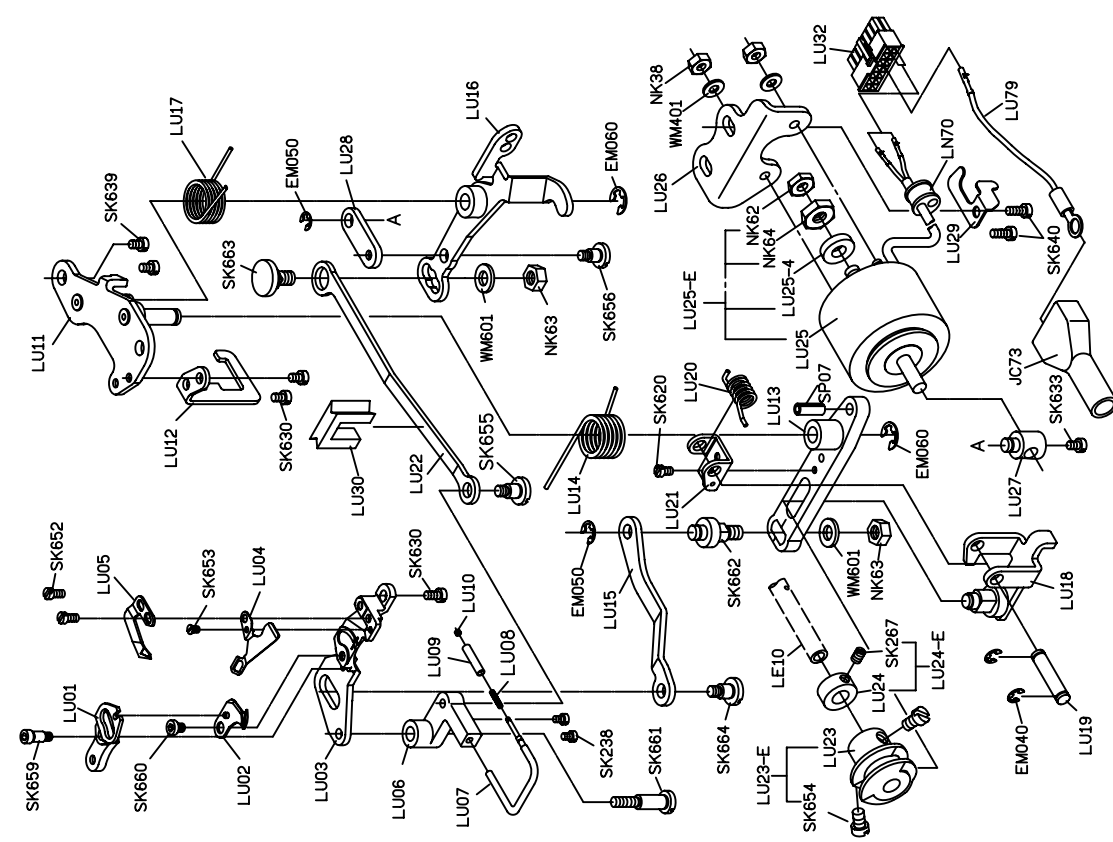




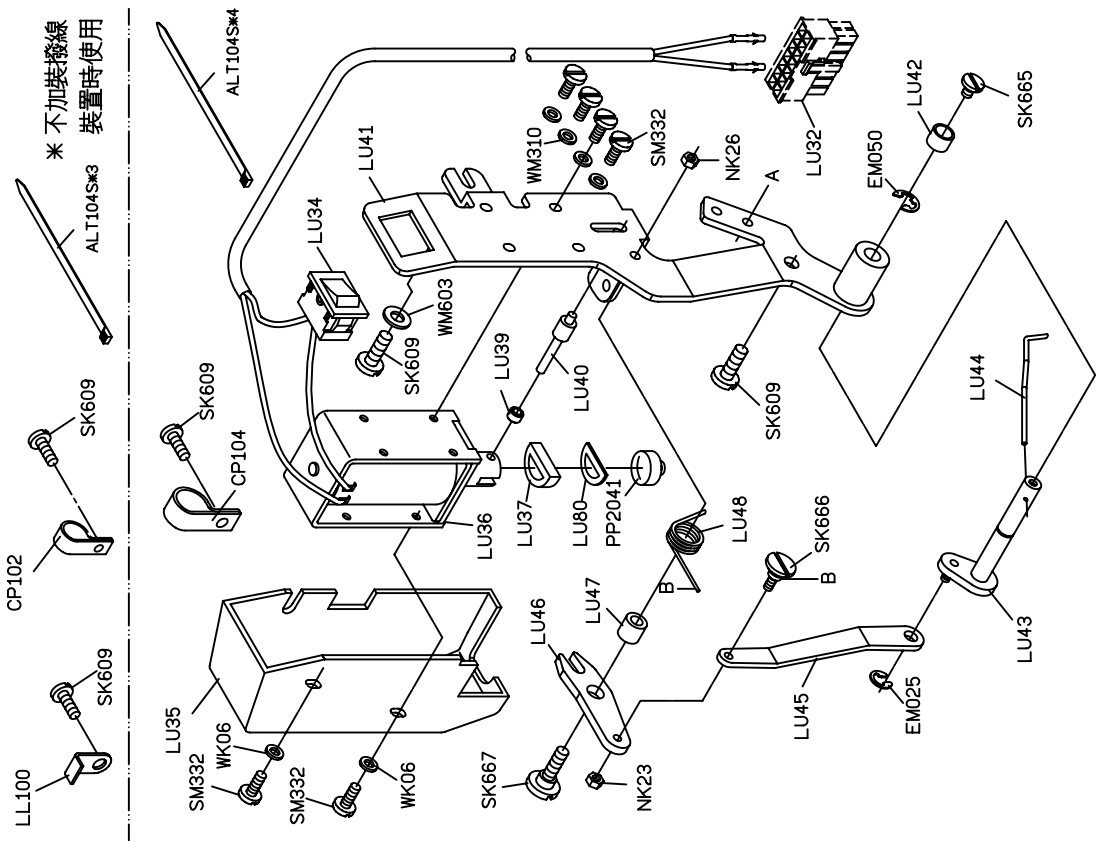
# PARTS LIST FOR LU GROUP



# PARTS LIST FOR LU GROUP







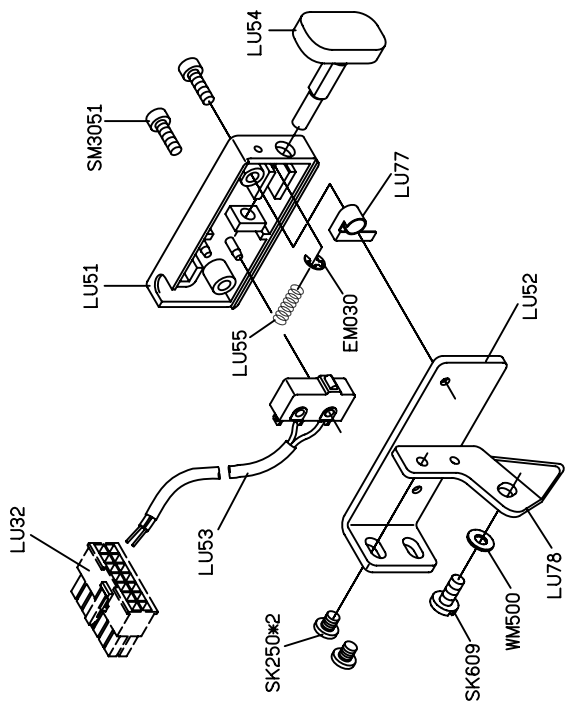
LL100 SK609 CP102 SK609 ALT104S\*3

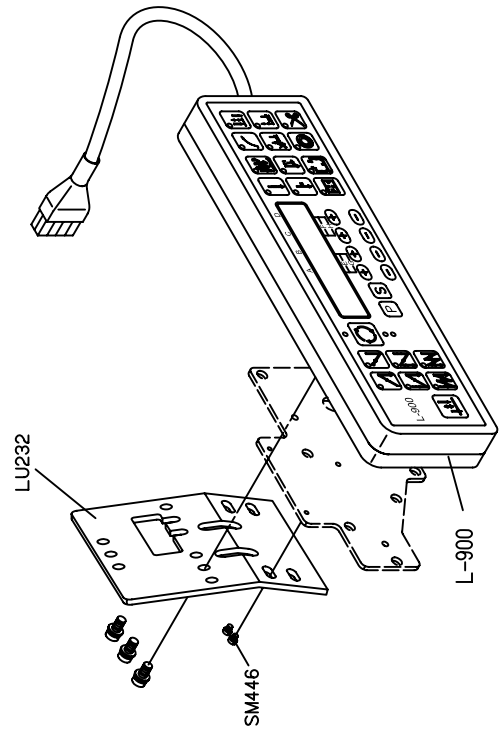
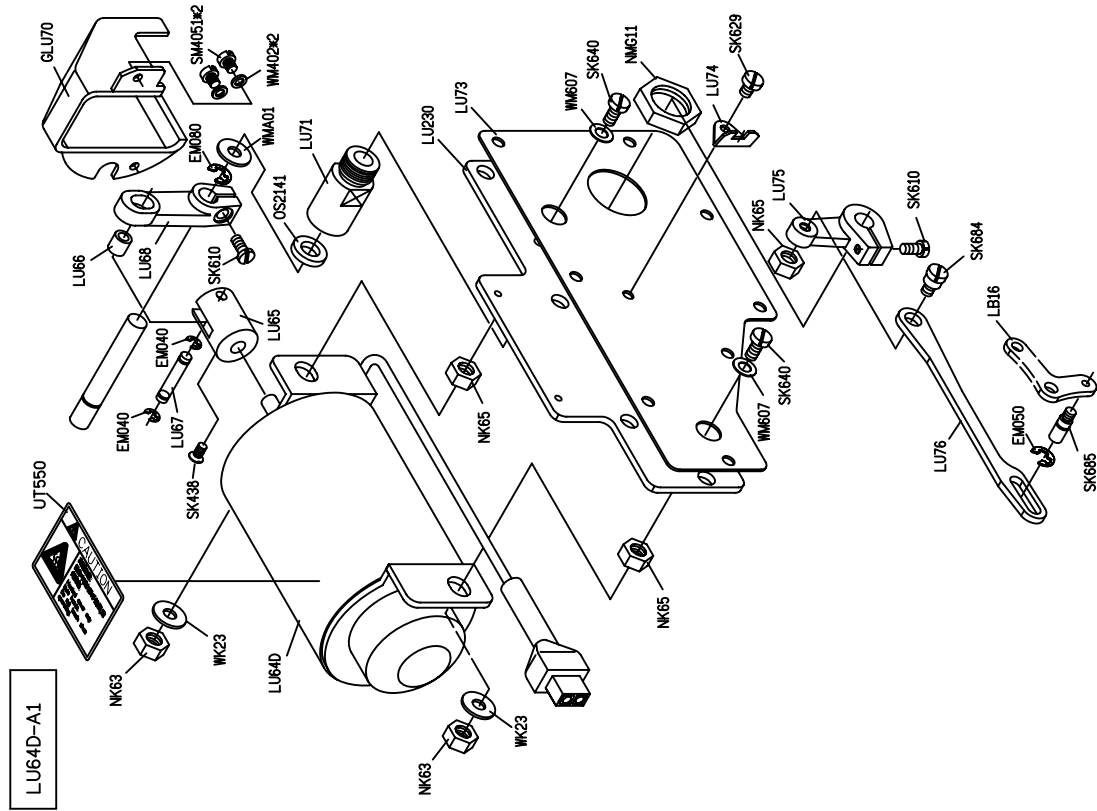
CP102 SK609 ALT104S\*4

ALT104S\*4

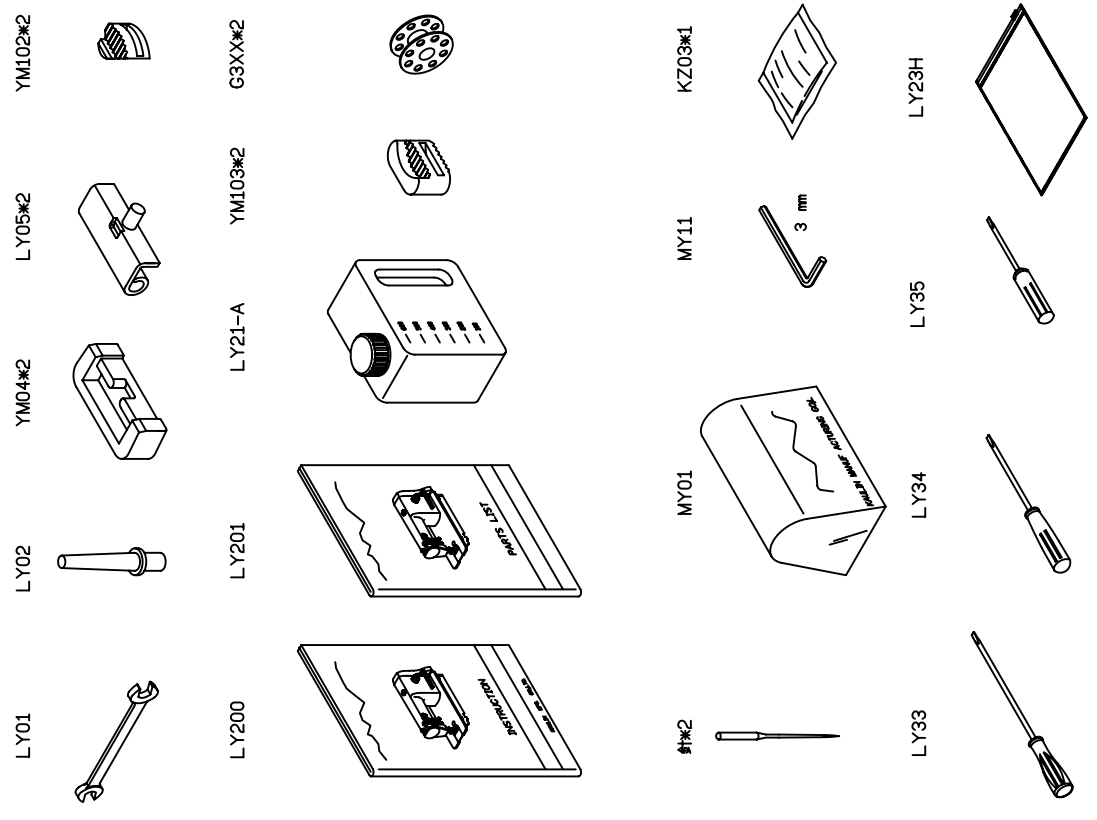
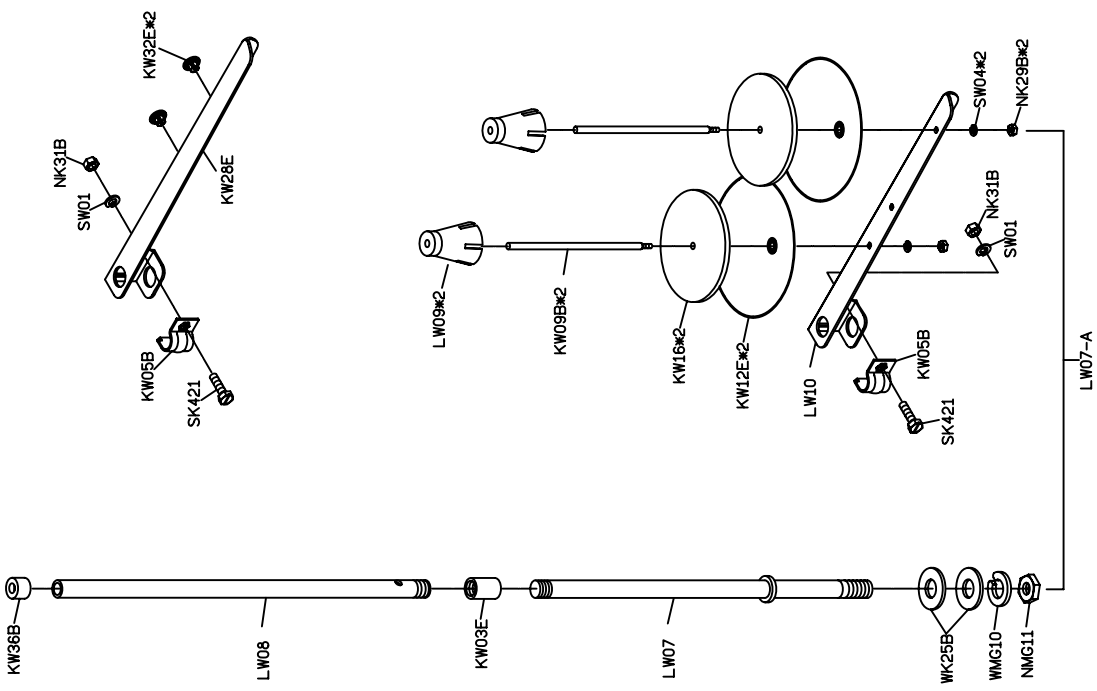
LU35 WK06 SK332 LU36 WK06 SK332 LU37 SK667 LU39 SK609 WM603 LU40 SK609 LU41 SK609 LU42 SK665 EM050 LU43 SK666 LU44 LU45 EM025 LU46 SK667 LU47 NK23 LU48 SK609 LU49 LU50 EM050 LU51 SK609 LU52 LU53 LU54 SK609 LU55 EM030 LU56 LU57 LU58 LU59 LU60 LU61 LU62 LU63 LU64 LU65 LU66 LU67 LU68 LU69 LU70 LU71 LU72 LU73 LU74 LU75 LU76 LU77 LU78 LU79 LU80 LU81 LU82 LU83 LU84 LU85 LU86 LU87 LU88 LU89 LU90 LU91 LU92 LU93 LU94 LU95 LU96 LU97 LU98 LU99 LU100

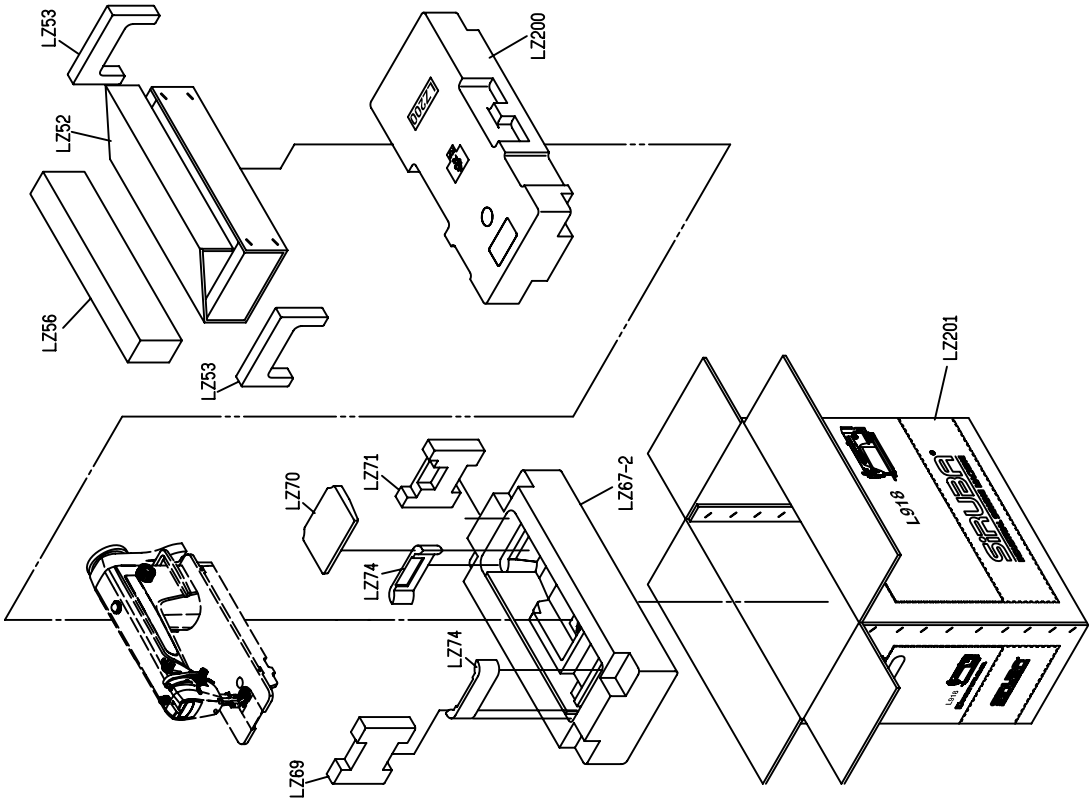
＊ 不加裝撥線 裝置時使用





註：此部份置於配件箱內













# L918

## WITH TRIMMER

高林股份有限公司 KAULIN MFG. CO., LTD.